

가치를 기반으로 한 제품 구매 (Value-based Purchasing)의 중요도와 이점

Why to consider **Expertise**, **Quality** and **Integrity** through the **entire lifecycle** of measurement equipment?

Park In-Soon

Regional Channel Marketing Manager

Korea – South Asia Pacific Region

Agilent Technologies Singapore



What do Customers Value?



400 Customers
Surveyed

**400 Agilent customers were surveyed online
Across 4 industry segments and multiple roles:**

- **Access to Agilent's Technical Expertise** ranks #1
- **Customers consistently rated these as most important:**
 - **Expertise,**
 - **Problem Resolution**
 - **Minimal Downtime**



Agenda and objective for this discussion

Take a broader perspective in choosing measurement vendors

Entire solution lifecycle, across four stages

Potential costs and opportunities at each stage

Ensuring the best customer experience throughout

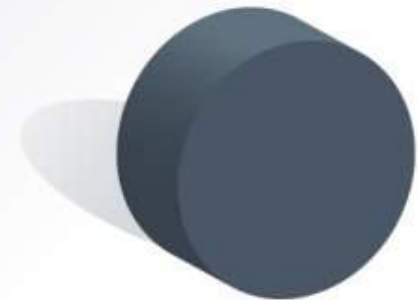
We
welcome
your
inputs

Comparing test equipment vendors & products

Line of sight

Product-by-product comparison

- Features
- Functions
- Performance



Comparing test equipment vendors & products

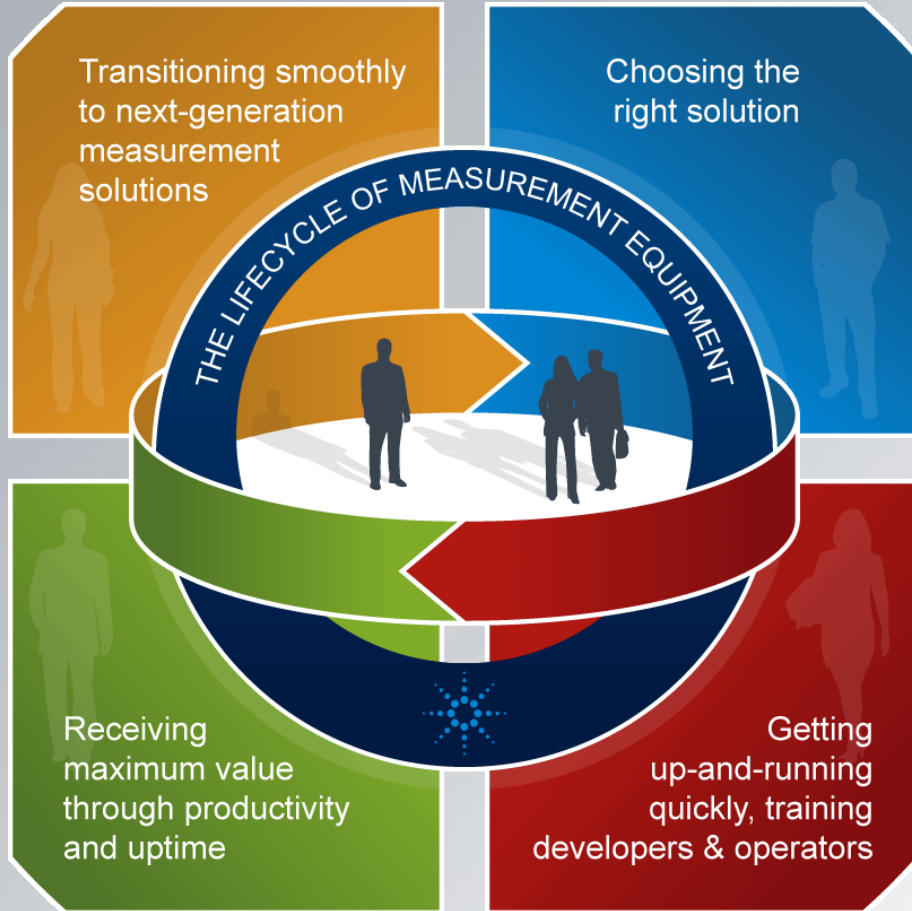
Line of sight

Complete lifecycle (purchase-to-disposal) comparison

- Right decision for immediate needs
- Right decision for the long run



Line of sight to the complete lifecycle

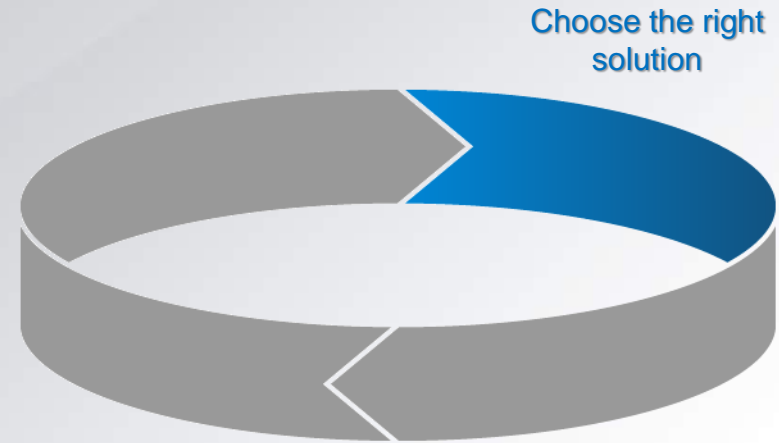


A direct result of what you, our customers, have told us is most important

Choosing the right solution

The best choice

- Long-term implications
- Crucial during this stage
 - Breadth of choice: broadest portfolio of products, services and financial solutions
 - Depth of expertise and resources: for choosing best equipment, then configuration, migration
 - Partnership: sustained trust for lifecycle and beyond

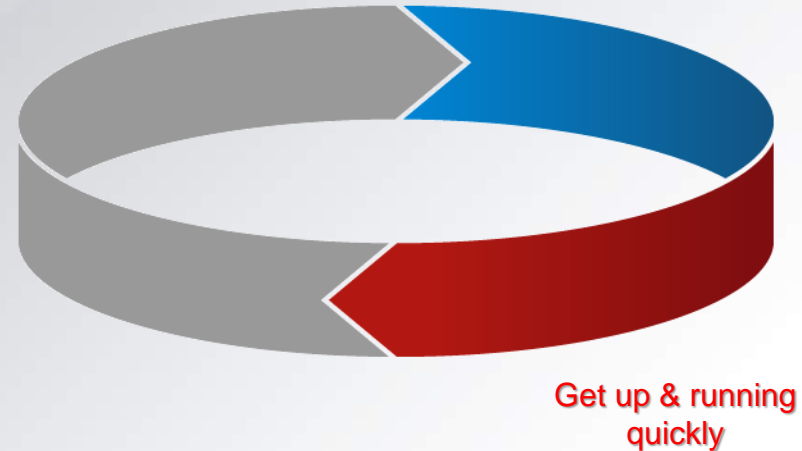


Getting up and running quickly

The fastest deployment

Crucial during this stage

- On-time arrival
- At-the-ready expertise for setup
- Fast problem resolution
- Effective training for developers and operators

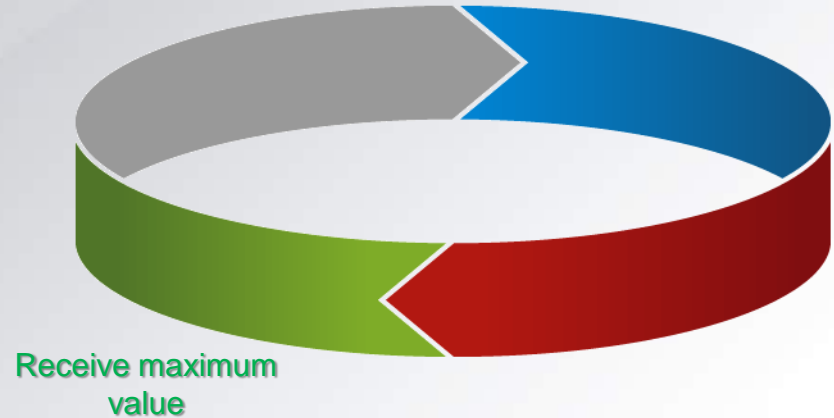


Maximizing value from investment made

The most value, the best results

Crucial during this stage

- Minimal downtime
 - Reliable and long-lasting products
- Top-notch expertise
 - People
 - Tools
 - Product design
- Confidence in results and measurements



Upgrading or replacing

The smoothest transition

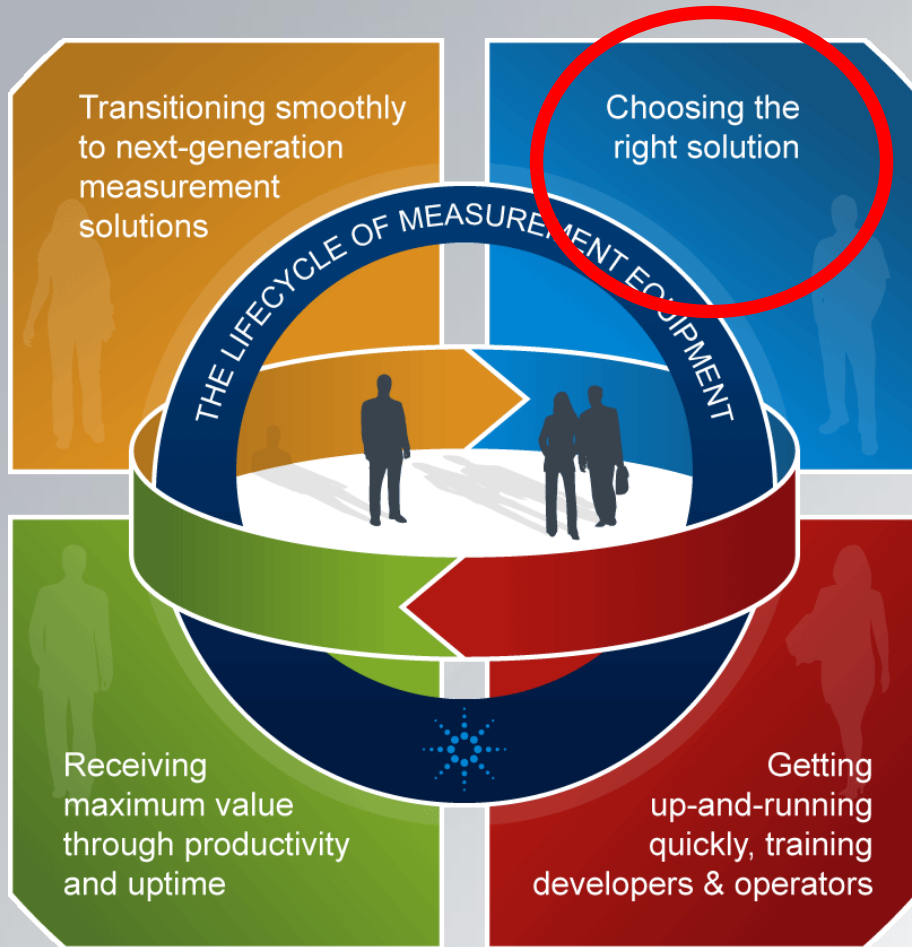
Crucial during this stage

- Clear path to new technology
- Preservation of existing code
- Technical expertise
- Generous End-of-Life and End-of-Support support policies

Transition smoothly



Line of sight to the complete lifecycle



A direct result of what you, our customers, have told us is most important

Broadest portfolio

The best choice

- Products
- Services
- Financial solutions



Expertise for choosing the right solution

The best choice

- Award-winning website
- Proven local technical expertise
- Mapping to your unique application



Expertise for configuring & migrating

The best choice



Application engineering expertise for configuring the solution and migrating to new technologies



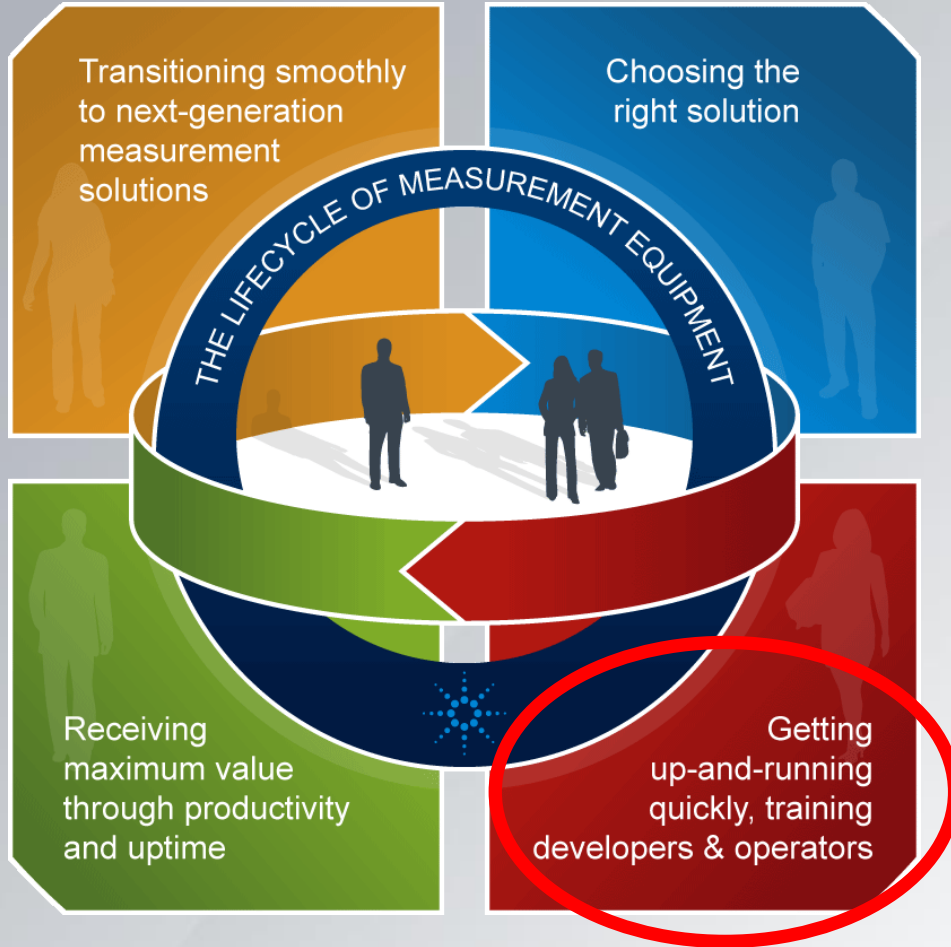
Partnership based on years of trust

The best choice

- Corporate foundation of integrity
- Conservative performance measurement
- Commitment to long-term support
 - Long product lives
 - Seamless product rolls and extensions
 - Superior technical support
 - Access to industry-recognized experts



Line of sight to the complete lifecycle



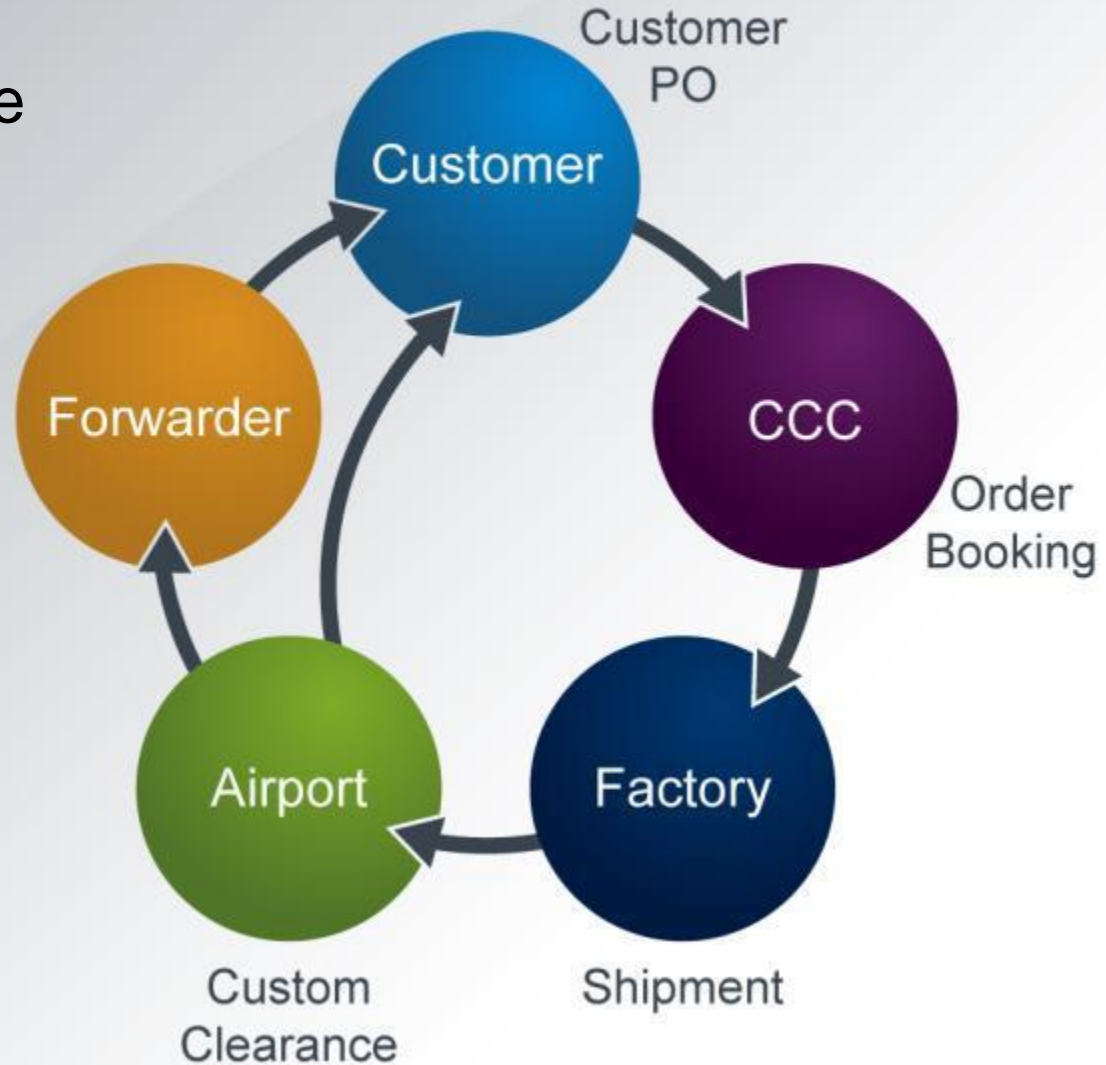
A direct result of what you, our customers, have told us is most important

On-time arrival of product at your doorstep

The fastest deployment



- Delivery to your schedule
- Result of process reengineering
- Tight coordination among
 - Divisions
 - Supply chain
 - Customer fulfillment
 - Sales teams



At-the-ready expertise for going online fast

The fastest deployment



- More industry experts than our competitors
- Largest library of free application content

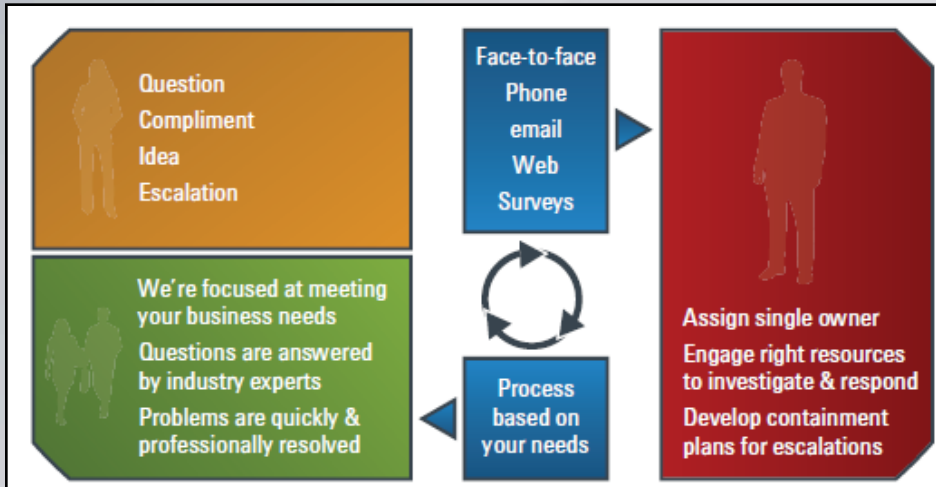


Fast response for fast recovery

The fastest deployment



- Commitment to contain within six business days (98% track record)
- Tracked centrally, consolidated, and deployed, to prevent reoccurrence
- One worldwide tool and supporting team, with one assigned case owner
- Questions answered by industry experts
- Sponsorship by Agilent senior management



For more information on responsiveness, visit:
www.agilent.com/find/contactus

Click here for technical support , visit:
www.agilent.com/find/techsupport

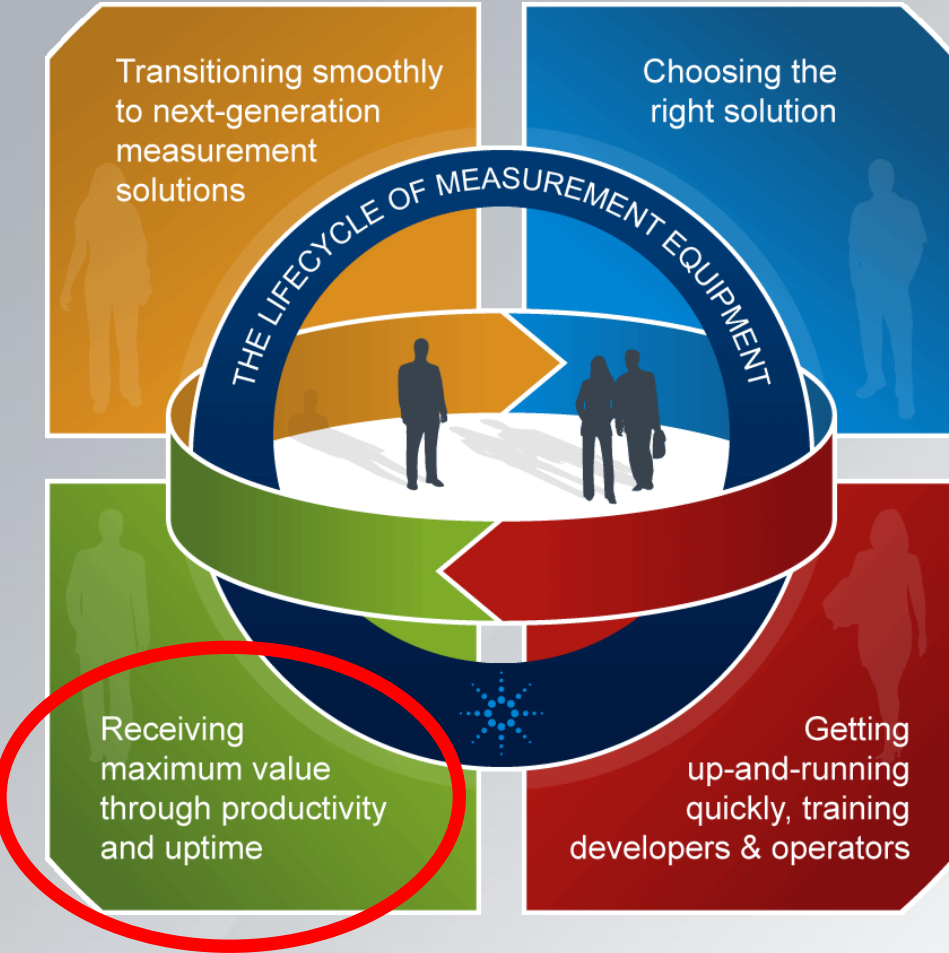
Effective training for developers/operators

The fastest deployment

- Tailored courses and curricula
- Globally at your site or Agilent
- Novel learning opportunities
- Services training
- Application notes



Line of sight to the complete lifecycle



A direct result of what you, our customers, have told us is most important

Minimal downtime: reliability & longevity

The most value, the best results



- From start of product lifecycle throughout supply chain
 - Skilled Quality and Reliability professionals
 - Design ruggedization processes
-
- Comprehensive techniques and processes
 - System and Subsystem Reliability Modeling
 - Failure Modes and Effects Analysis (FMEA)
 - High Temp Operating Life Testing (HTOL)
 - Component Selection and Risk Analysis
 - Highly Accelerated Life Testing (HALT)
 - Environmental Stress Screening
- Component Stress De-rating
 - Reliability Growth Modeling
 - Physics of Failure Analysis
 - Margin and Abuse testing
 - Design of Experiments
 - Step-stress Testing
 - Thermal Imaging
 - Weibull Analysis
 - Peer Reviews

Minimal downtime: reliability & longevity

Important Terms & Definitions



HALT/Step-Stress Testing: Highly Accelerated Life Testing and Step-Stress Testing are methods to uncover weaknesses in design and material during the product development phase.

Component selection and Risk Analysis: Procedure to identify high risk parts (e.g. non-preferred suppliers) and track progress made toward minimizing their use during the NPI cycle.

Peer Reviews: Process where a design engineer reviews his/her design (e.g. a microcircuit or PCA) with a group of expert engineers to ask probing questions, get second opinions and improve the robustness of the design.

Margin and Abuse Testing: Environmental Testing of proto/pilot units at the extreme limits of the specs (or sometime beyond) to uncover weaknesses and limits of the design. Often times two stresses are applied simultaneously.

Thermal Imaging: Use of Infrared camera technology to locate hot spots on PCA's, then verified with thermocouples, and then design changes are taken to reduce component temperature/junction temperature.

Accelerated Life Testing and High Temperature Operating Life: Subject assembly or component to elevated stress levels (typically temperature) to accelerate the age of the Device Under Test (DUT) so that expected operating life of the item can be calculated; design changes may be taken in increase operating life.

Physics of Failure (PoF): Analytical techniques (e.g. electron microscope) employed to determine the root cause of a failure so that effective corrective action can be taken.

FMEA: Failure Modes, Effects and Analysis – formal procedure to itemize list of expected failure modes, score them and ultimately prioritize them for expenditure of resources (basically a fancy formal prioritization process).

Design of Experiments (DOE): Advanced statistical methods to efficiently conduct engineering experiments to quantify the impact of multiple variables on some attribute of interest (e.g. how does temperature, dwell time and force affect the strength of a wire bond).

Reliability Growth Modeling: Mathematical methodology to calculate the improvement of reliability of a product during the course of an NPI, and to predict the eventual reliability of the product once it is in the field.

Weibull Analysis (pronounced Wy-bull): Statistical methods to calculate reliability metrics based on a set of field failure data.

Environmental Stress Screening (ESS): Reliability procedures for creating a battery of environmental stress tests and then applying them to production units with the objective of detecting defective units before they get shipped to a customer.

Expertise in people, tools & product design

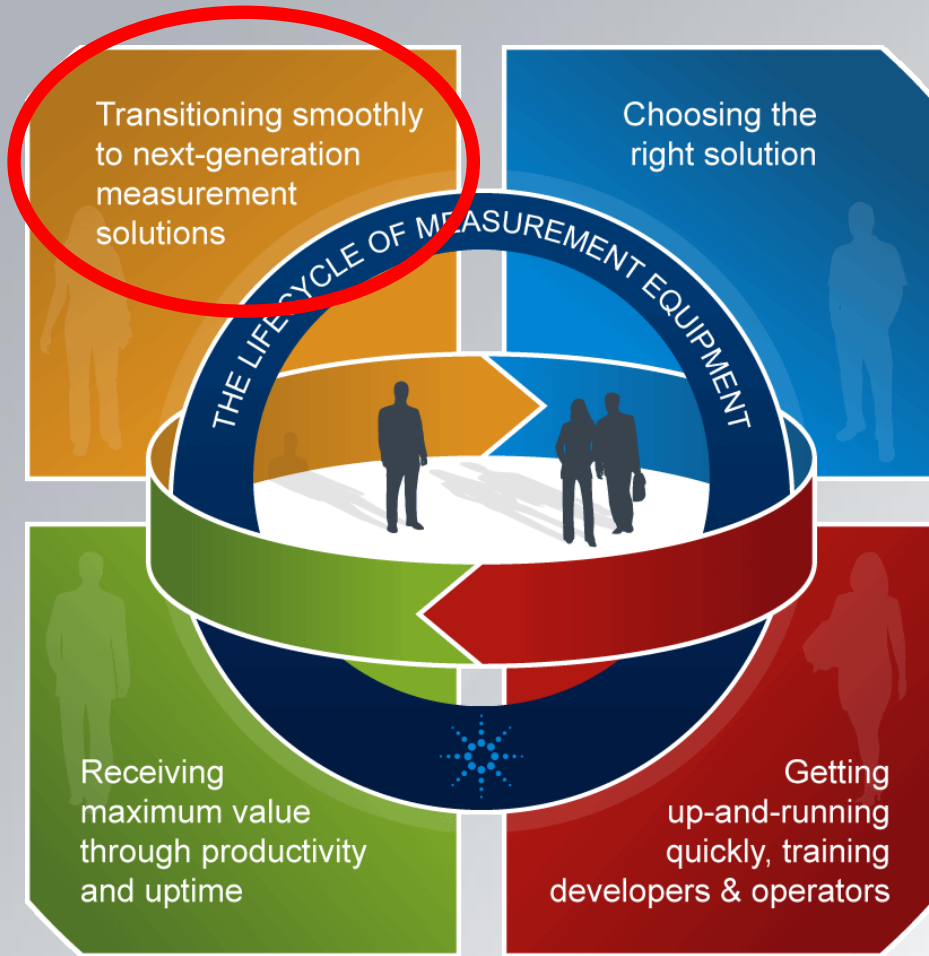


The most value, the best results

- Full suite of application consulting
- Experience to handle any test and measurement issue
- 200 application specialists worldwide
- Largest free library of application notes and more
- Expertise as reflected in products themselves



Line of sight to the complete lifecycle



A direct result of what you, our customers, have told us is most important

Clear migration path and code compatibility

Avoiding obstacles for the smoothest transition



Take advantage of new technology

Beware of migration costs

- Reviewing/modifying Test Programming Code
- Ensuring adequate test coverage
- Migration downtime



Migration expertise

- Delivering migration management services

Instrument code compatibility

- Ensuring plug-and-play where possible
- Where not, emulation code

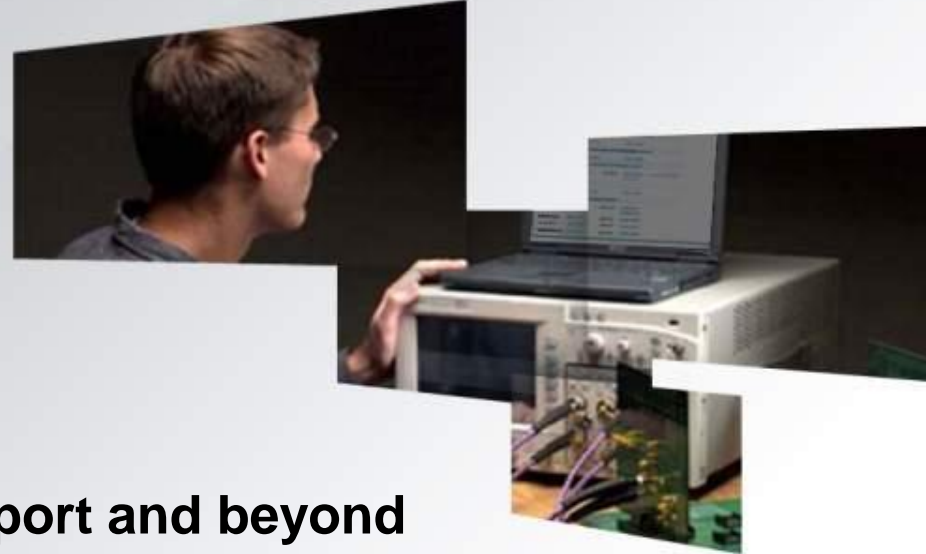


Generous EOL/EOS HW support policy

The smoothest transition

End-of-Life (EOL): communications and flexibility

- 6 months before ending sales, with direct / planned replacement
- 1 year before ending replacement options



End-of-Support (EOS): extended support and beyond

- Minimum 5-year support period after discontinuance
- Beyond: possibility of calibration and repairs



Where expertise counts?



Throughout the entire product lifecycle

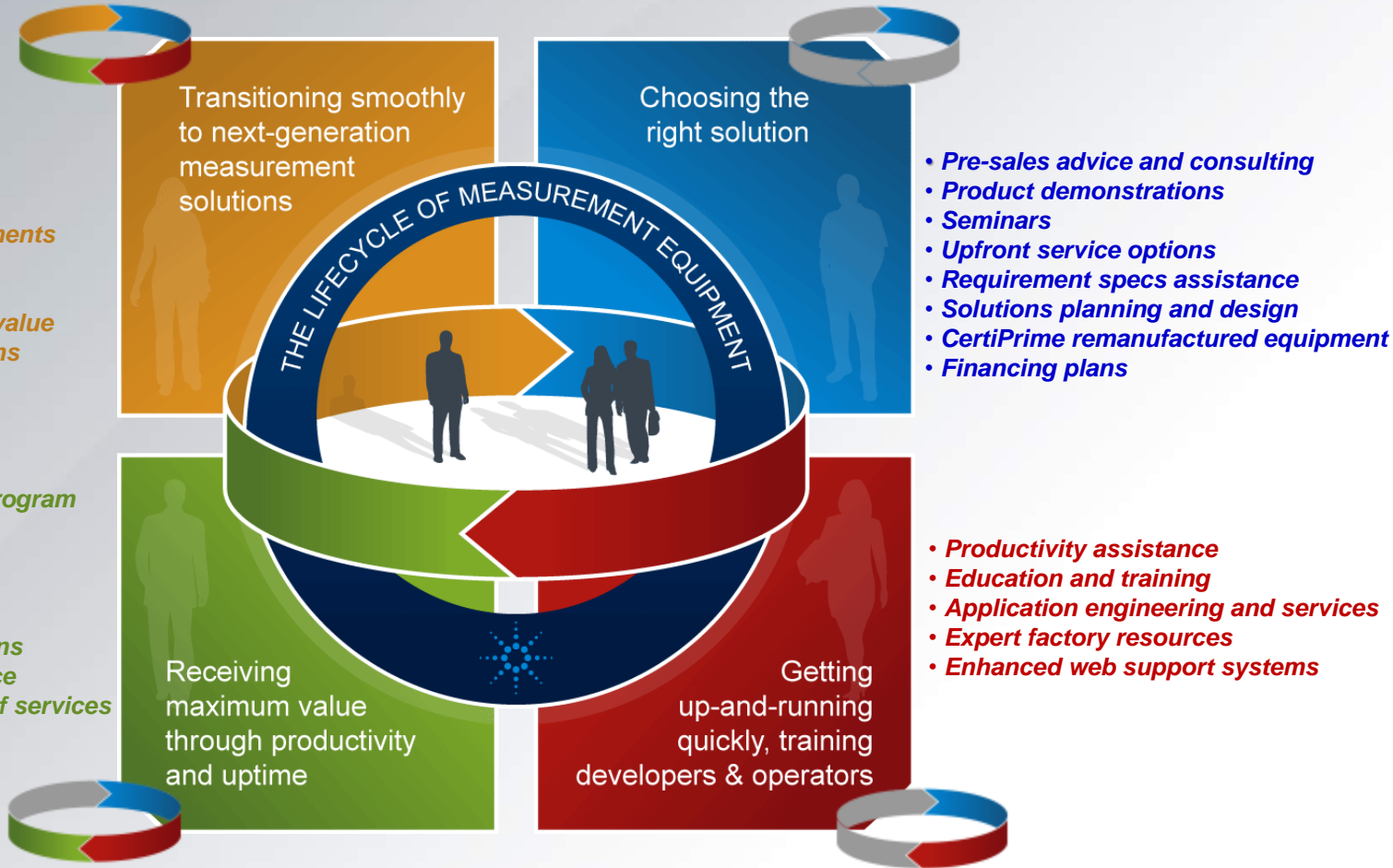
Comprehensive view of the complete solution

Line of sight



Summary

Agilent delivers *Expertise, Quality and Integrity* through the entire lifecycle of measurement equipment!



Value-Based Purchasing Exhibits

Reliable, Long Lasting Products

- Agilent designs & builds into our products industry leading reliable technology for years of trouble-free operation

Application Expertise & Training

- Bringing you the most established and proven local technical expertise in the T&M industry to help you choose the right solution for your unique application

Responsiveness

- Agilent's customer escalation system & process ensures your issue is contained within 7 business days

Self-Maintainer Services

- Agilent provides exceptional support, services and tools for self-maintainers - here's how Agilent can help

Support Life Policies

- Agilent provides 6 months notice of the end of sale date for products where a replacement is available and 1 yr notice if no replacement is planned; We provide 5 years of guaranteed support once a product is removed from our price list.

Instrument Security

- Agilent is committed to delivering business solutions to our Aerospace & Defense customers and helping you meet the non-product related requirements of the Dept of Defense and your end customers

Total Cost of Ownership

- Agilent's Total Cost of Ownership model provides transparency when considering the value of purchasing from us - you'll find we are the clear leader in providing you with the highest total value

70 Yr History Built on Trust

- Agilent is a measurement partner you can trust and one that will always be there for you

Customer Data Privacy

- Customers are Agilent's most valuable assets and we take every precaution to protect your privacy. Your information is not shared without notifying you or obtaining your consent and we give you the choice to opt-in or out.

Lifecycle Management

- Agilent provides a comprehensive suite of lifecycle services to minimize the cost of technology migration

InfoLine Asset Management

- InfoLine provides convenient 24x7 online access to the resources and information critical to your operation's success (historical & technical info, service orders & notes, CAL & repair pricing, and more)

Environmental Sustainability

- Agilent's commitment to the environment is part of our corporate legacy and embraced by senior management world-wide - we are recognized as one of the Global Most Sustainable Corporations in the world

Business Management System

- Agilent's extensive Business Management System encompasses a customer focused quality policy, a single world-wide ISO9001 certificate, several ISO registrations (9001:2008, 17025, 14001), and an internal team of certified auditors.

Financing Options

- We offer the broadest range of financial and purchasing options to fit your budget and desired financial structure

- We are committed to ensuring your shipment arrives when you need it by seamlessly collaborating across our entire organization

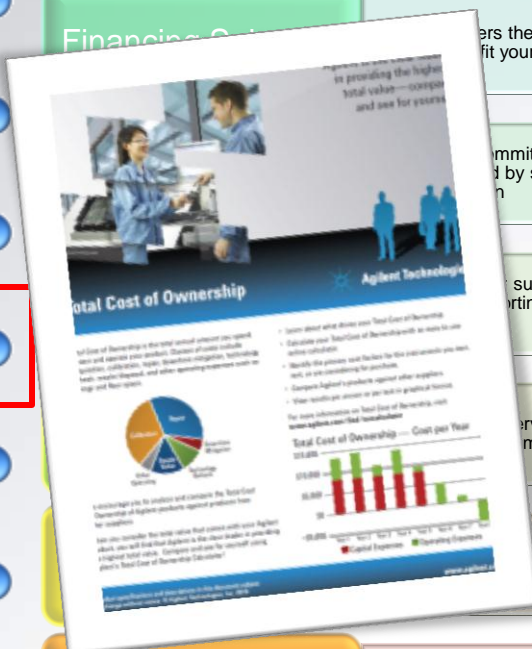
- We ensure your success with access to over 200 application solutions supporting over 165 measurement standards world-wide

- Our service provides higher uptime with like-new measurements you can count on

- We provide world-class local language customer business contacts & support across the globe

Technology Refresh

- Ensure transitioning to new technologies is of minimal impact



TCO(Total Cost of Ownership): 총소유비용

- 1997년 미국의 대표적인 컨설팅 회사인 가트너 그룹 (Gartner Group)에서 발표
- 기업에서 사용하는 정보화 비용에 투자 효과를 고려하는 개념
- 즉, 회사에서 전산 시스템을 도입할 때 단순히 초기 투자 비용만이 아니라 **도입 후의 운영이나 유지 보수 비용까지 고려하는 것**
- 한 대의 컴퓨터를 이용하는 데 드는 전체 비용
- 하드웨어, 소프트웨어, 업그레이드 비용, 상근 직원 및 훈련과 기술지원을 담당하는 상담 직원 급여 등을 포함

Total Cost of Ownership(TCO)

Leader in highest total value

Understand total cost contributors

- Acquisition
- Calibration
- Repair
- Downtime mitigation
- Technology refresh
- Resale/disposal
- Operating expense

Quantify TCO

- Calculate for current assets, rentals, equipment being considered
- Compare Agilent with other suppliers
- View results per annum or per test



Determinants of value

The most value, the best results

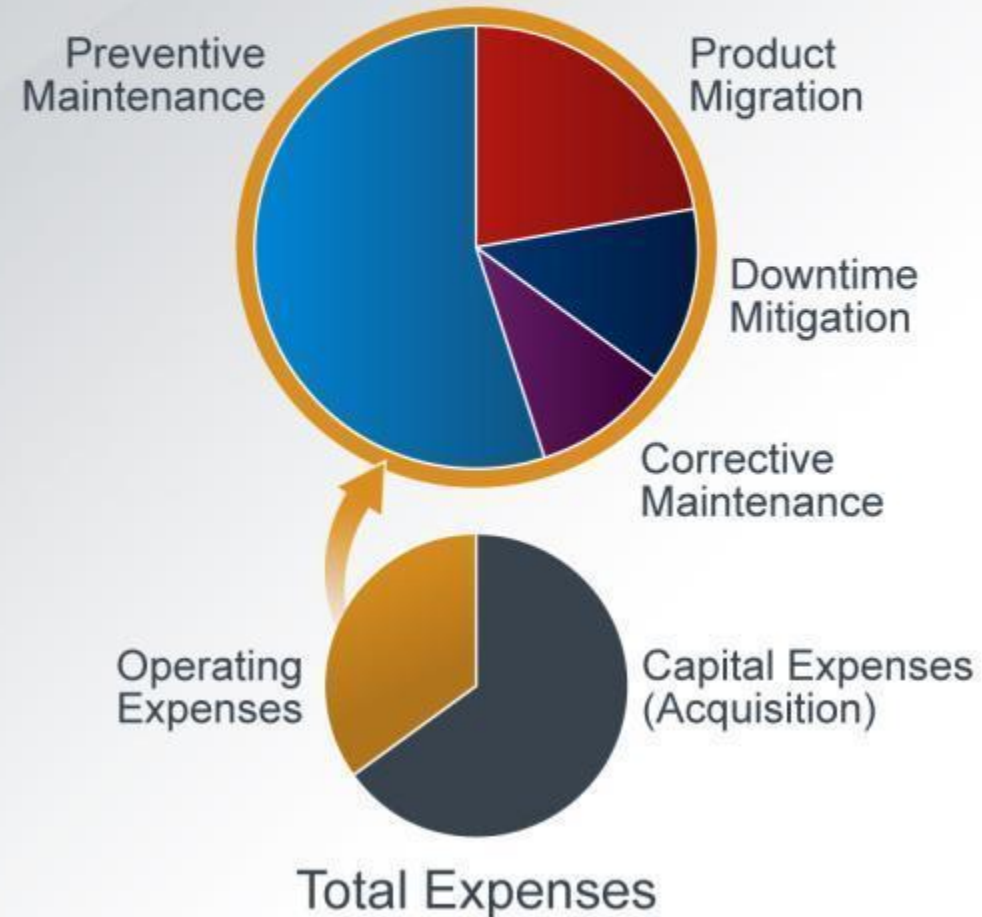


Minimal downtime,
maximum contribution

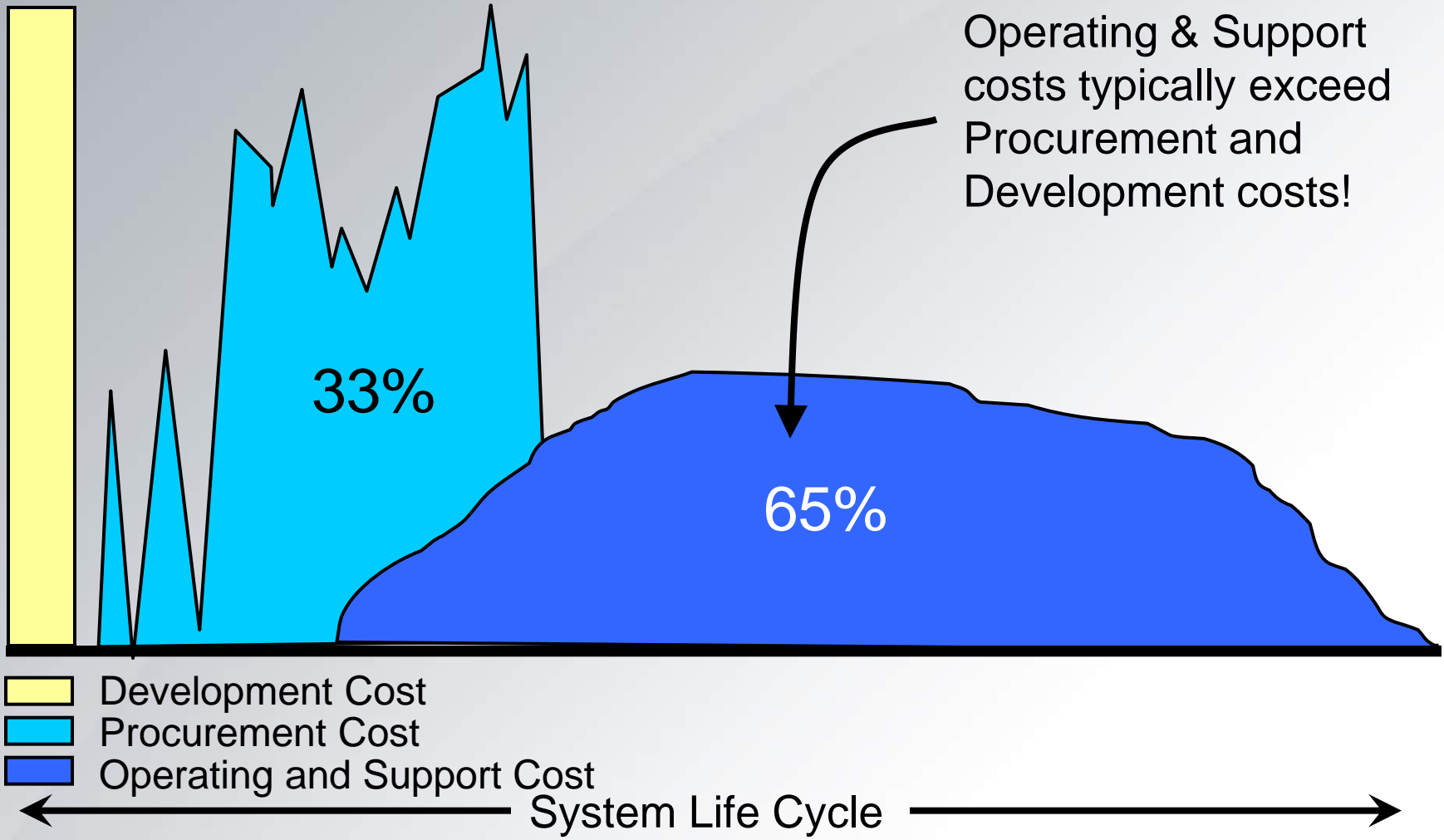
Minimal cost

- Lower capital expense through amortization over long lifetime
- Lower maintenance cost through expertise for calibration
- Shorter downtime through reliable products
- Lower migration cost through code compatibility and expertise

TCO Operating Expenses
(per year)



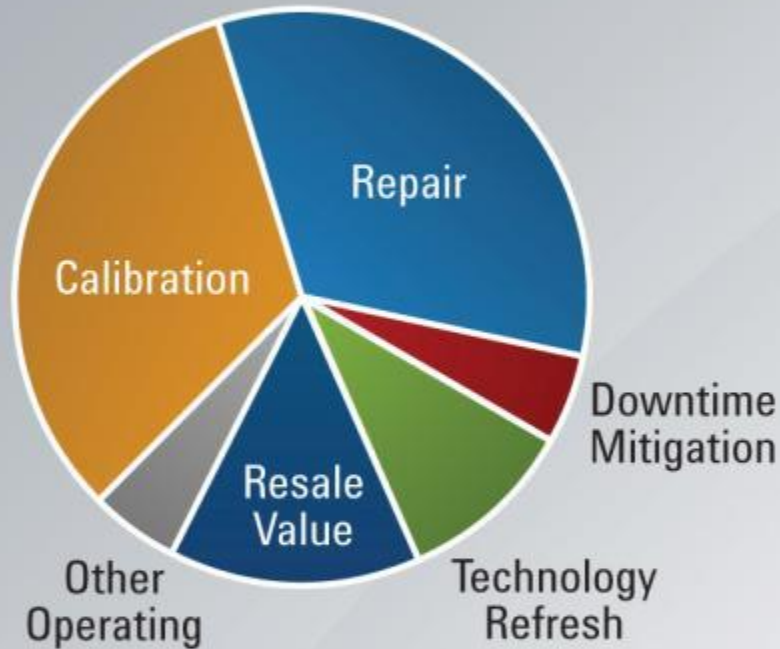
Why Total Cost of Ownership Is Important



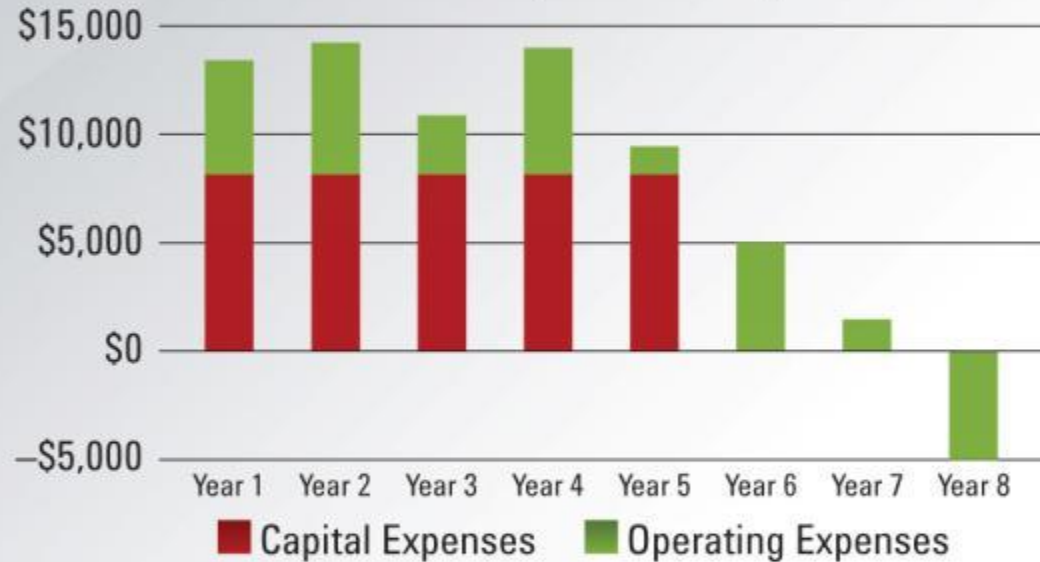
Source: US Navy

Total Cost of Ownership (Continued)

Leader in highest total value



Total Cost of Ownership — Cost per Year



Case #1 – Migration from Agilent 8566 to Agilent PXA

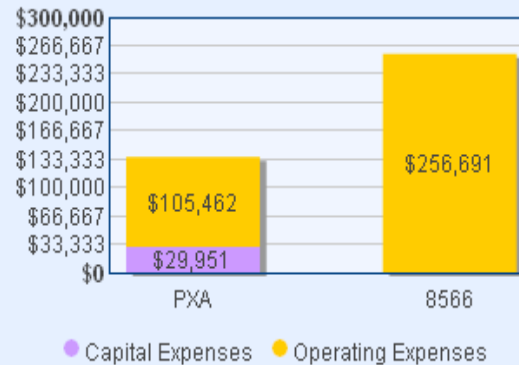
For an equipment in a customer installed base, which do you think will be the main contribution to the Total cost?

- Capital Expense?
- Operating cost? Metrology? Maintenance?

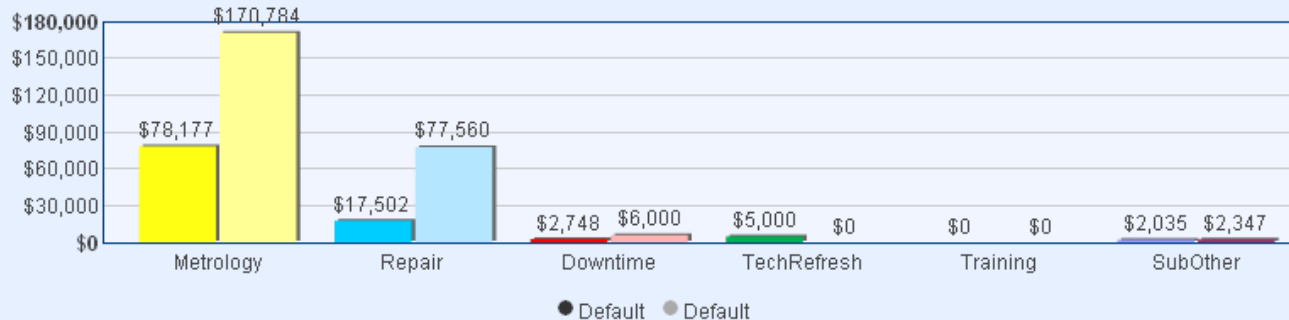
Lifetime Total Cost of Ownership

	PXA	8566
Capital Expenses	29951	0
Operating Expenses	105462	256691
Metrology	78177	170784
Contracted Repair	17502	77560
Downtime Mitigation	2748	6000
Technology Refresh	5000	0
Training & Education	0	0
Energy	720	1032
Floorspace	115	115
Consumables	800	800
cables	400	400

Lifetime Total Cost of Ownership



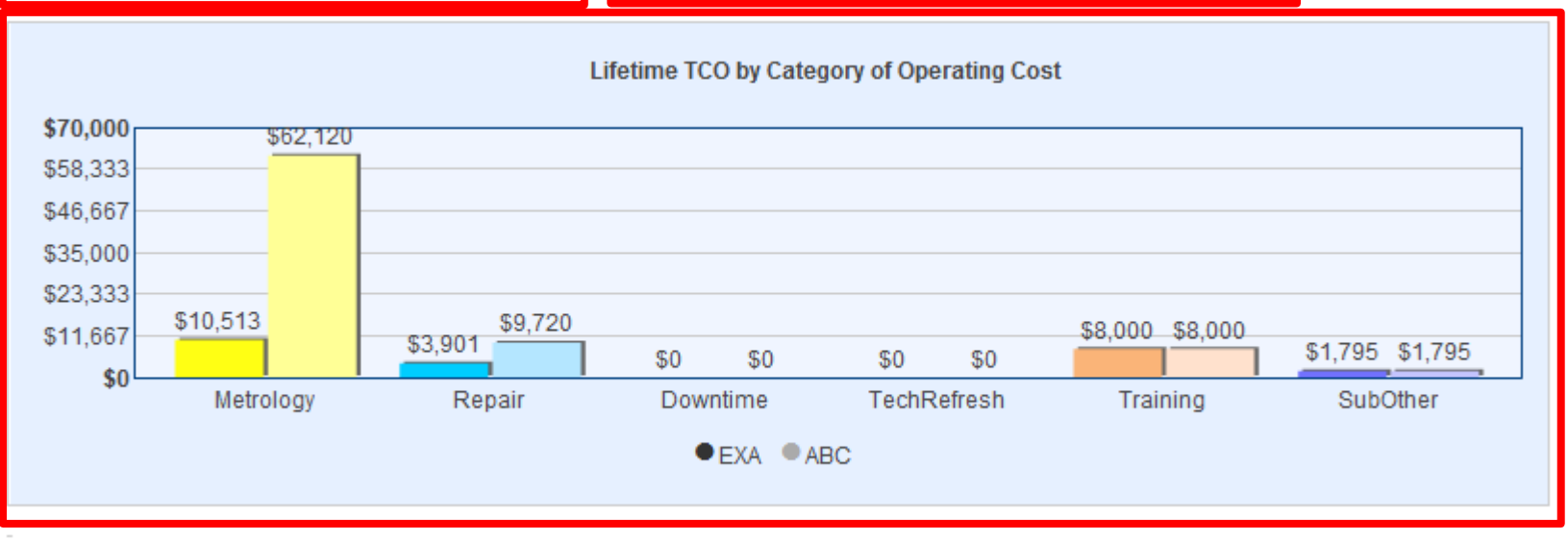
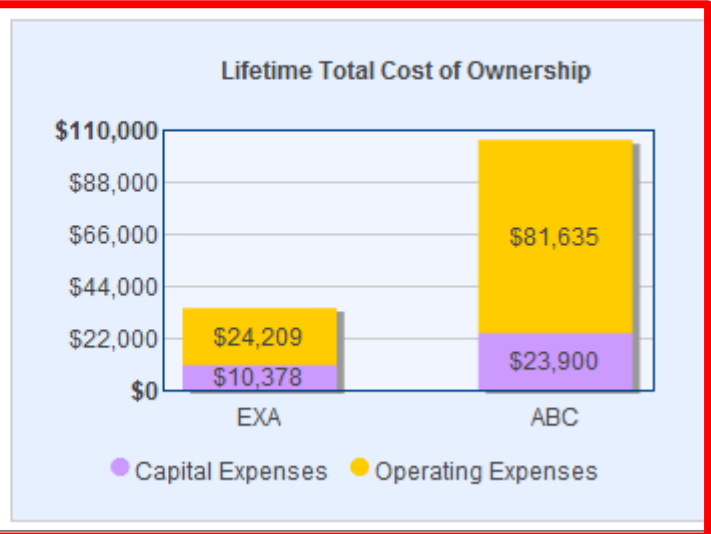
Lifetime TCO by Category of Operating Cost



Case #2 – Compare Agilent EXA to ABC model

Lifetime Total Cost of Ownership

	EXA	ABC
Capital Expenses	10,378	23,900
Operating Expenses	24,209	81,635
Metrology	10,513	62,120
Per Incident Repair	3,901	9,720
Downtime Mitigation	0	0
Technology Refresh	0	0
Training & Education	8,000	8,000
Energy	480	480
Floorspace	115	115
Consumables	800	800
Other Costs (type to customize)	400	400



Agilent Advantage

Why Buy Agilent

Search: [Go]

Home > Products & Services > [Contact an Expert](#)
[Site Feedback](#)

Agilent Advantage

Agilent Advantage We continually invest in technologies and best practices to make Agilent products and services the true measure of quality. These investments occur in six key areas, which we call the Agilent Advantage:

- Agilent Advantage
- Safety & Regulatory
- Product Specifications
- Standards Conformance
- Customer Experience
- Partner Requirements
- Conduct & Privacy
- Agilent Advantage Highlights

The six key areas of the Agilent Advantage are based on the fundamentals of the Agilent Quality Policy:

- Safety & Regulatory:** Ensure that all products comply with applicable safety and regulatory requirements
- Product Specifications:** Ensure products meet or exceed published specifications
- Standards Conformance:** Improve the effectiveness of business management systems to meet the *International Organization for (ISO) 9001 Quality Management Standard*
- Customer Experience:** Continually monitor and improve our customers' total experience
- Partner Requirements:** Hold suppliers, partners, and contractors accountable to established quality requirements
- Conduct & Privacy:** Treat customers according to Agilent's Standards of Business Conduct and privacy policies

The 6 True Measures of Agilent Quality

- Safety & Regulatory
- Product Specifications
- Standards Conformance
- The 6 True Measures of Agilent Quality**
- Customer Experience
- Partner Requirements
- Conduct & Privacy

Related Links

- Why Buy Agilent**
There's a big difference between a product's price and its value. If you're only looking at the initial purchase price, then you're not making an informed decision! Take a 360 Degree View of Your Purchase Decision!

Privacy Statement | Terms of Use | Contact Agilent | About Agilent | © Agilent 2000-2012 [Site Feedback](#)

- Highlights the Agilent Quality Policy
- Differentiates Agilent's Quality & Customer Experience
- Provides Agilent Quality Policy proof points

http://www.agilent.com/find/the_agilent_advantage

Agilent Technologies Products & Services | Technical Support | Applications & Solutions | [United States](#) | [Portal](#) | [Login](#)

Search: [Go]

Home > Products & Services > [Contact an Expert](#)
[Site Feedback](#)

Why Buy Agilent

- Why Buy Agilent
- Choosing the Right Solution
- Getting Up and Running
- Maximizing Value Over Years of Use
- Refreshing the Technology
- Why is Agilent your Best Choice

Introduction & Lifecycle overview

Guiding you to the right solution

Take a 360 degree view of your purchase decision

There's a big difference between a product's price and its value. If you're only looking at the initial purchase price, then you're not making an informed decision!

- It's time to look beyond initial purchase price to account for *Total Cost of Ownership* over the complete instrument lifecycle
- It's time to look beyond the specs of a product and to recognize broader value attributes that distinguish a product as the best long-term solution
- It's time to get the most for your money by making a well informed decision

Agilent has created [21 brochures](#) to help you gain a 360 Degree View of your important purchase decision.

Related Links

- Agilent Advantage**
We continually invest in technologies and best practices to make Agilent products and services the true measure of quality. These investments occur in six key areas, which we call the Agilent Advantage.

- Highlights Agilent's value beyond the product
- Differentiates Agilent beyond specs & features
- Provides 1-pagers on 21 value-added factors

<http://www.agilent.com/find/whybuy>

Value-based Purchasing Benefits

Value Purchasing is an approach to customers that **focuses** on how they can **get more values for the customer's business through vendor's expertise**, not just value from the use of the products

Value Purchasing benefits **the customer** in these ways:

- Enables customers to **make the best choice** of a vendor and solution more broadly, **by examining the complete lifecycle (purchase-to-disposal)**
- Refocuses scoping and needs of solutions for both the **immediate and long-run**

Backup slides

Helping you stay secure, informed, in control, and in compliance

Agilent customer data privacy

- Respecting and protecting privacy of data you provide

Agilent Instrument Service Notes

- Delivering up-to-date technical info on changes to products

InfoLine

- Providing window into Agilent's Repair and Calibration Services

Compliance

- Helping you comply with US Dept. of Defense Instrument Security program

Fostering precision and quality, for you and Agilent

- Business Management System
- Backing our commitment to quality through extensive ISO certification
- A single ISO9001 Certificate world-wide

